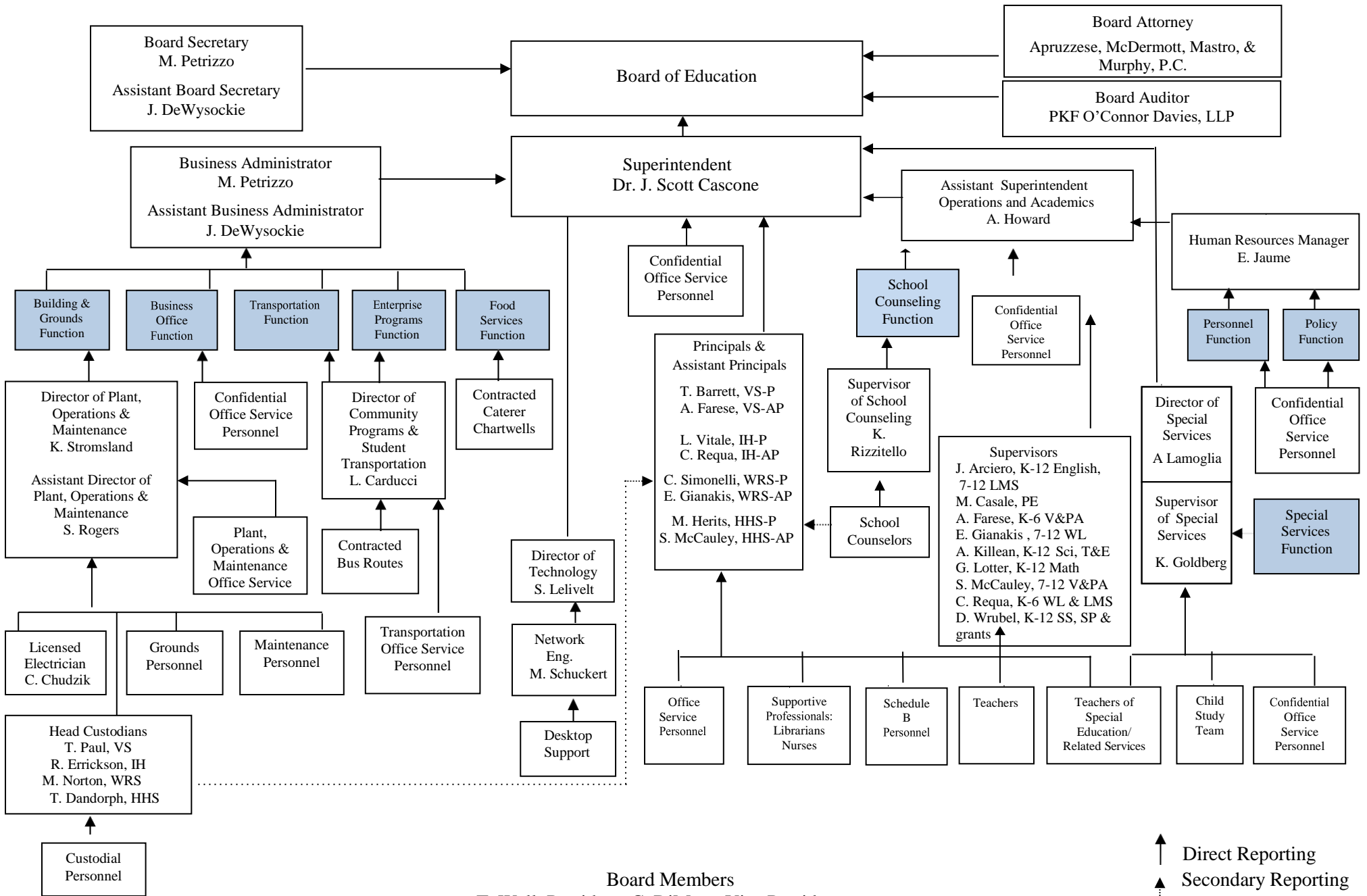


# HOLMDEL TOWNSHIP BOARD OF EDUCATION ORGANIZATIONAL CHART



Board Members  
T. Wall, President, C. DiMare, Vice President  
J. Buckley, S. Collur, A. Libecchi, A. LoPresti, J. Mann, P. Reddy, K. Tuccillo

↑ Direct Reporting  
 ▲ Secondary Reporting